




urning Chatter

Newsletter of the Blue Mountains Woodturners Inc.
P.O. Box 223 Springwood NSW 2777

Edition 132

JUNE 2011

Mission Statement: Promote woodturning as a creative skill for all ages

Remember

Remember

Remember

Remember

DO NOT PARK ADJACENT TO RESIDENTIAL HOMES or FIRE STATION ACCESS DRIVEWAYS
Use the SHOPPING CENTRE CAR PARK [safest] or use the TREED AREA near WATER TANK by
turning off Rusden Rd after public RED POST BOX & before green 'TENNIS COURTS' sign.

The **June 4th meeting** will commence at **9.30 instead of 10.am**
to enable a **discussion session on the possible club house extensions**

Clive Lyle is our **June 4th** demonstrator—**turning French knitting dolls.**

[There will be a "doll Thursday" shortly. The dolls, along with small cars will be donated to an organization called Christmas Child who distributes packets of toys.]

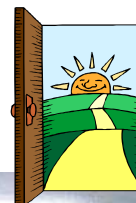
There will be a BBQ lunch available. June 4. There will be a BBQ lunch available.

BM Gazette readers will have seen the comprehensive 1/4 page article with photo of our **BM Club Challenge** event at Blaxland High School in 'Along the Highway', page 20, Wednesday May 25 by Clive Lyle.

Remember there is action at the **Club house on Thursdays** and call ins to check it out, have a cuppa & a chat, moot an idea, seek information, and help with some maintenance is encouraged.



Last week some started on the next Chess Set, and Darrell started on the Dust Extraction system.



Testing the Grey Matter

(Answers next page)

Can you spot the new editor of TC in any of the photos in this edition???

Committee

President: John Krook
13 Lucasville Rd Glenbrook 2773 4739 1764
Vice-President: Barrie Ward 4759 1159
Secretary: Mike Boyle
16 Lindsay Rd Faulconbridge 2778 4751 4229
Assistant Secretary: Denis Millard
84 Meeks Cres Faulconbridge 4751 3580
Treasurer: Barry Robinson
10 Summer Rd Faulconbridge 2776 4751 5856
Publicity Officer: Tony McKale
17 Cottle Road Bullaburra 2784 4759 3713
Committee Members: Phillip Brien 4751 5061
Geoff Mulligan 4758 8254 & **Web content collector**
John Mulquin 4739 3729 & **TC photographer**
Public Officer: Tom Fox 4739 2788
Librarian: John Mulquin 4739 3729
Tool Maintenance: Allan Game 4739 1028
Welfare Officer: Don Barnes 4787 8592
First Aid Officers: Darrell Smith/Jan Pennell
Safety Officer Dave Roberts
Entry Admissions Des Tuck
Club Sales Barry Robinson
Catering Officer Charlie Jodrell
Welcoming Officers Ross Dando, Jan Pennell
Woodcraft Centre Rep. Rhys Jones
Web Page - Rhys Jones—47 395 295
email - woodturner@pnc.com.au
web page - www.bluemtnswoodturners.org.au

All Correspondence to:

P.O. Box 223 Springwood NSW 2777

Sub-Committees:

Frank Newton Award for Excellence: Don Barnes, Gil Scott
Sister Club Relationship with Franklin Woodturners NZ:
Colin Hyndes, Ross Dando, Clive Lyle
Toys: Clive Lyle, Allan Game, Jan Pennell, Darrell Smith, Paul Treble

TURNING ESCAPE: Rhys, Coral, Jan, ? SEPT 2012

For next Newsletter
INFORMATION to EDITOR
by noon the Friday after the Committee Meeting
i.e: **Friday June 24**
Photos-Notices-Comments
woodturner@pnc.com.au

Thankyou Daniel Clift & Dave Roberts for Photos

Grey Matter Answer

For medical reasons Kaye has resigned.
Potential editor(s) please contact Kaye, Rhys
or committee member at June 4 meeting.

Woodturning Lessons

How can you get training in woodturning?

One of the primary aspects of our Club's activities is the provision of training for all members of any level of expertise. Training days are held on Saturdays and Tuesdays at Blaxland. The costs vary depending on which days you attend and are very, very economical. Anyone wishing to attend the Saturday Training days should contact:
Allan Game 4739 1028

Quote of the Month

Surely amongst our varied, and
talented members, we have
another willing editor.

some of May 7 audience



Is the new editor in this photo?????





Calendar Settings

Committee Meetings:
Currently on the Thursday (1 week and 2 days)
prior to the normal monthly meeting. [Daytime.]

MONTHLY CLUB MEETING 1st Saturday 19 Calver Ave Mt Riverview
9.30am START 9.30am START 9.30am START 9.30am START 9.30am START 9.30am
BBQ LUNCH BBQ LUNCH BBQ LUNCH
CLIVE LYLE turning FRENCH KNITTING dolls JUNE 4TH

MAY 7 KAREN BLEWDEN TURNING A PEPPER MILL

For those present these photos will remind you how Karen did it so that you can [if you haven't already].



New to Show & Tell—May 7 2011

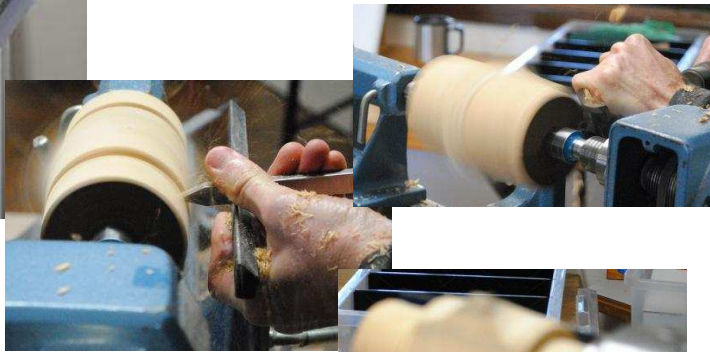
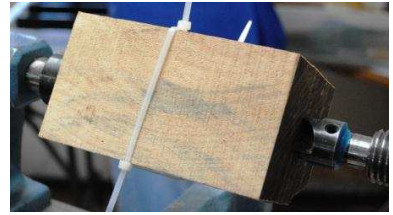
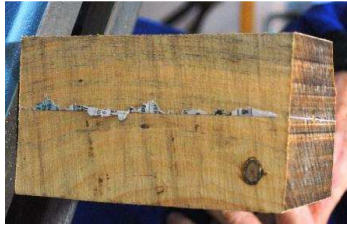


MAY 7

JAN PENNELL

STREPTAHEDRONS [via David Springett]

For those present these photos will remind you how Jan did it so that you can [if you haven't already].



Everything you expect in a hardware store

Highway Hardware
& Garden Centre

Mon - Fri: 7.00 to 5.00
Saturday: 7.30 to 4.00
Sunday: 9.00 - 4.00

FREE DELIVERY

- Free Friends Club
- Gas refills & testing
- Key Cutting
- Sharpening Service
- Free Quotes
- Demonstrations
- Battery Rejuvenation
- Free Project Sheets
- Sheet Cutting

Ph: **4739-1066**

www.highwayhardware.com.au



31 Great Western Highway Blaxland